



RESPONSIVE DESIGN
MAXIMISING DRY HANDLING
HIGH FORCE CONSTRUCTION
POWER SHOULDER

NEW

EAGLE F1 SUPERSPORT

BORN TO BE FASTER

with DUAL PLUS TECHNOLOGY



Wet/Dry
Performance



Handling
Performance



Sport
Performance

Goodyear Eagle F1 SuperSport and Dual Plus Technology are trademarks of Goodyear.



GOODYEAR

EAGLE F1 SUPERSPORT

BORN TO BE FAST

With more than 60 years of designing specialized racing tires for NASCAR, Goodyear pushes the limit with new race-inspired Eagle F1 SuperSport tire with 4 key technologies to deliver superior grip and handling performance for luxury sports performance vehicles



Dual Plus
TECHNOLOGY

Specialised power zones designed to deliver excellent performance for wet and dry roads with innovative U-shaped compounds



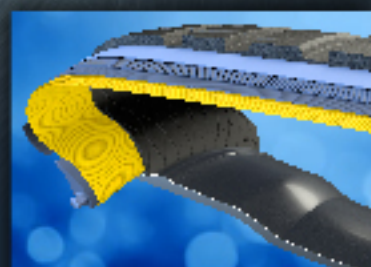
Powerline Cover
TECHNOLOGY

With tread deformation protector to achieve excellent footprint preservation for high-speed stability



Power Shoulder
TECHNOLOGY

Designed with Power Shoulder Technology with massive closed outside pattern for more agile dry performance and cornering



HighForce Construction
TECHNOLOGY

With super stiff sidewall design for improved handling and driving stability

TEST RESULT



AVAILABLE SIZE

05/40ZR18 (86Y)	245/35ZR19 (93Y)
225/40R18 (92Y)	245/40ZR19 (98Y)
225/40ZR18 (92Y)	255/35ZR19 (96Y)
225/45R18 (91Y)	255/40ZR19 (100Y)
225/45ZR18 (95Y)	285/35ZR19 (98Y)
235/40ZR18 (95Y)	275/35ZR19 (100Y)
245/35ZR18 (92Y)	285/30ZR19 (98Y)
245/40ZR18 (97Y)	245/35ZR20 (95Y)
245/45ZR18 (100Y)	255/35ZR20 (97Y)
255/35ZR18 (94Y)	285/35ZR20 (99Y)
255/40ZR18 (99Y)	295/30ZR20 (101Y)
275/40ZR18 (103Y)	305/30ZR20 (103Y)
225/35ZR19 (88Y)	245/35ZR21 (96Y)
225/40R19 (93Y)	285/30ZR21 (100Y)
235/35R19 (91Y)	315/30ZR21 (105Y)
235/35ZR19 (91Y)	

* Based on Internal testing (235/35R19 91Y, Ford Focus ST, test track: Goodyear Proving Ground)

Eagle F1 Supersport